



1.35m violent crimes/year  
£37b/year



1% population  
63% of violent crimes



Antisocial personality disorder (ASPD)

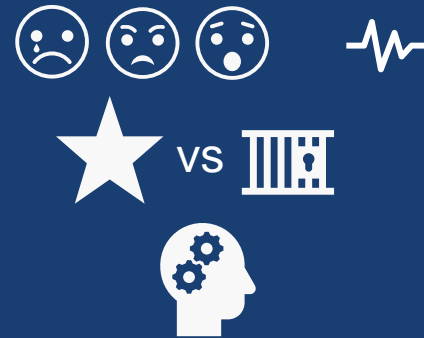
**HETEROGENEOUS DIAGNOSIS  
NO SUCCESSFUL TREATMENTS**



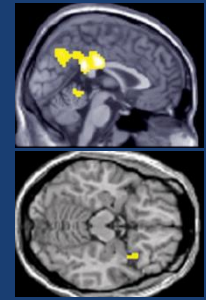
Clinical



Neuropsychology



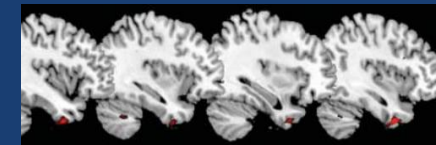
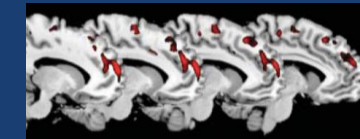
Neuroimaging



III  
ASPD+P  
>activity



★  
ASPD-P  
>activity

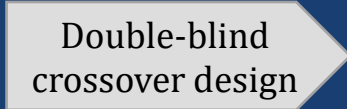


ASPD+P <GMV

Oxytocin



20 ASPD+P  
20 ASPD-P  
20 HC



Neuropsych  
sMRI  
rsMRI  
ASL



1. Differential neuropsych & neurobiological profiles in ASPD+/-P vs HC
2. Oxytocin will influence neuropsych & amygdala blood flow

**Inform diagnosis & treatment development**